

AVONDALE BOROUGH 2017 SUMMER NEWSLETTER

July 2017

STATE STREET BRIDGE CLOSING

The County of Chester will be closing the State Street Bridge on July 13, 2017. The bridge will be replaced with a 36' - 6" single-span adjacent prestressed concrete NEXT beam superstructure with a composite reinforced concrete deck, eliminating the east sidewalk and providing a wider curb-to-curb width of 26'-0". The profile of the roadway approaches and deck will be similar in elevation to the current profile, but will incorporate engineered vertical curves to improve stopping sight distance and drivability. Guide rail will be installed on all approaches to the structure and will be transition to a pedestrian safe, crashworthy structure mounted steel bridge barrier. There will be detour postings. The construction is expected to be completed Spring 2018.

Please call Audrey Everett @ McCormick Taylor 610-640-3500 if you have any questions regarding the bridge closing.

FIRE HYDRANT FLUSHING

Avondale Borough will begin flushing the water system the week of July 10th. During this time you may encounter air or cloudy water. Let your faucets run until it clears.

If you have any questions or concerns please call the Borough Office.



MUNICIPAL SEPARATE STORM SEWER SYSTEM (MS4)

The Proposed MS4 permit application for the next 5 year permit cycle that will be submitted to PADEP on September 16, 2017 will be discussed at the Council Meeting on August 15th. The application includes the Borough's Plans on how they propose to manage and reduce the pollutants being discharged to the streams.

FEMA FLOODPLAIN ORDINANCE

The proposed FEMA Floodplain Ordinance will be presented to Council for adoption at the August meeting. A copy of the proposed ordinance will be available at the Borough Office.

Council meetings are held on the third Tuesday at 6:00 p.m. at the Borough Hall

PARK SMART AND AVOID FINES

The Borough's contracted police department reminds you that when parking on a two way street you need to park in the direction as the flow of traffic. This is your right side of your vehicle to the curb. Also.....

Do not block the sidewalk in anyway even when parking in your own driveway. Keep sidewalks clear at all times. No Parking on Lawns.

Parking the right way will avoid getting a fine.

Thank you for your cooperation!

Parkesburg Police Department

Borough of Avondale

Established 1894

Mayor - Dottie Howell

COUNCIL MEMBERS

Bill Shore - President

Steve Cummings -Vice President

Dave Besselman

Abby Pyle

Wilson Lysle

Borough Office

**110 Pomeroy Avenue
P.O. Box 247
Avondale, PA 19311**

Phone: 610-268-8501

Fax: 610-268-8205

Secretary: Becky Brownback

Treasurer: Sandy Masten

PUBLIC WORKS SUPERVISOR

Rick Davis

website: www.avondaleboro.net

E-mail: secretary_avondale-boro@comcast.net





LOUD PARTIES

The Borough Office has received several complaints regarding **loud parties** and lasting until late at night. Another BIG concern is most of these parties have several vehicles that are obstructing the streets making it impossible for emergency vehicles to get through.

Remember: your neighbors may have small children or they may have to get up early for work the next day.

PLEASE BE CONSIDERATE AND RESPECT YOUR NEIGHBORS!!!

LOWER THE VOLUME!!!



Council is working with the Borough's legal Counsel on a way to handle large loud parties in the Borough.

LEASH AND CLEAN UP AFTER YOUR PET

Please keep your dog contained on your property or on a leash when walking your pet.



Please be considerate of others and clean up after your pet!

CURFEW ORDINANCE #115

It is unlawful for anyone under the age of 18 years old to remain in or upon any public or private establishment in the Borough between the hours of 10:00 p.m. and 6:00 a.m. Unless accompanied by a parent or guardian

COOKING OILS, FATS & GREASE

- Do not pour oil, grease, or fats down the drain
- Soak up the grease after frying with paper towels and put in the trash
- Pour larger amounts of used cooking grease into a container with a lid. Refrigerate to harden and then place in the trash.
- Minimize the use of your garbage disposal. Put food scraps into the garbage.
- Never pour motor oils down the drain! It is illegal.

SELLING YOUR HOME ????

If you are **selling** your home, you will need an inspection to acquire an occupancy permit. This is required before you can go to settlement.

RENT OR LEASE ANY UNITS IN YOUR DWELLING???

If you **rent or lease** any units in your dwelling, a yearly inspection is required. **An inspection is required each time you change tenants.**

APPLICATIONS ARE AVAILABLE AT THE BOROUGH OFFICE

BRUSH AND LAWN WASTE PICK-UP

The Borough requires you to use biodegradable paper yard waste bags. Composting will not be picked up in any type bag. No Exceptions!

Bags can be purchased at the Borough Office during business hours or call the Borough Office at 610-268-8501 to make arrangements to purchase bags. \$5.00 for 15 bags

MONDAY PICK-UP THROUGH DECEMBER 4th

Please have your bags out by 7:00 a.m.

COMPOSTING WILL NOT BE PICKED UP IN ANY OTHER TYPE BAG. NO EXCEPTIONS!

All brush and tree limbs are to be cut in lengths no longer than 3 feet and tied in bundles one person can handle (2 to 3 feet around). Any tree limbs or brush not tied and bundled and any lawn waste not in paper bags will not be picked up.



OPEN BURNING IN THE BOROUGH IS PROHIBITED!

**Avondale Borough
P.O. Box 247
Avondale, PA 19311**

SUMMER 2017 NEWSLETTER

WORK SESSIONS

The Borough Council holds work sessions on the 2nd Tuesday of each month at 2:00 p.m. Please bring any questions about water and sewer to this meeting.

WATER & SEWER EMERGENCY

If you have a water or sewer emergency Call:
484-643-0024
Someone is on call 24 hours a day 7 days a week.

**IF YOU WOULD LIKE TO BE MAILED A COPY OF
THE NEWSLETTER, OR IF YOU HAVE ANY COM-
MENTS OR SUGGESTIONS REGARDING THE
NEWSLETTER - CALL THE BOROUGH OFFICE**

COUNCIL MEETINGS

Council meetings are held on the **third Tues-
day** of each month at 6:00 p.m..

If you have anything you would like to discuss
at the meeting - please call the Borough Of-
fice no later than the Friday before the meeting
to be placed on the agenda. If deemed neces-
sary, Council meetings are also held on the
fourth Tuesday of each month.

STREET LIGHTS AND STREET SIGNS

- ☐ If you happen to see a street sign missing or damaged, or
- ☐ any street lights out, please call the Borough Office.
- ☐ Please supply the Borough with the pole number so the



WHEN DO YOU NEED A BUILDING PERMIT?

The Borough follows the Pennsylvania Uniform Construction the 2009 International Construction Codes and amended sections of the 2015 International Construction Codes.

All non residential alterations, repairs, replacement, relocation and new construction are required to make application for a permit.

Building permits are required to construct, enlarge, alter, repair, move, demolish, or change the occupancy classification of a building or erect, install, enlarge, alter, repair, remove, convert or replace an electrical, gas, mechanical or plumbing system.

Detached carports, Detached Private Garages, Greenhouses, and Sheds which are under 1000 square feet and are an accessory to a detached single family dwelling requires a *zoning permit*.

Ordinary repairs to structures are exempt and do not require a building permit (*however they are required to meet the Code*).

EXEMPT

- Painting, papering, tiling, carpeting, cabinets, countertops and similar finishing work.
- One story tool or storage sheds, and similar uses provided it is less than 1000 square feet. (electrical when installed requires an electrical permit. A zoning permit is required).
- Prefabricated pools with less than 24 inches of water. Storable pools require a permit when more than 24 inches of water.
- Swings and playhouses.
- Window awnings projecting less than 54 inches off exterior wall without additional support.
- Replacement of existing roof material not exceeding 25% of the total roof area performed within any 12 month period.
- Replacement of existing siding.
- Replacement of windows that do not increase in size.
- Replacement of rain water gutters and downspouts.
- Minor electrical repair and maintenance such as receptacles, switches, and lighting fixtures remaining in the same location.
- Replacement of faucets, vanities, lavatories, sinks, water closets and other plumbing fixtures remaining in the same location. (*when plumbing lines are being changed a plumbing permit is required*).

Permits required for the following:

- The cutting away of any wall, removal of structural or load bearing supports.
- The removal or changing of the main means of egress (ex; front door).
- The addition, alteration, replacement of any plumbing lines such as, standpipes, water supply lines, sewer, drainage waste lines, gas, or similar piping.
- Electrical wiring that is relocated, replaced, or altered.
- Stand by generators permanently installed.
- Mechanical systems that are replaced, relocated or altered.



Property Maintenance - Weekly Inspections

The Borough's Code Enforcement Officer does weekly inspections for property maintenance issues. Here are a few items he will be looking for.

1. Weeds or grass that are not cut in excess of 6 inches in height.
2. Furniture not designed for outdoor use.
3. Vehicles that are: unlicensed, wrecked, abandoned, in a state of disrepair, or incapable of being moved under its own power. Vehicles are only allowed on approved off street parking and street parking.
4. Accumulation of trash, equipment, infestation, unsafe structures

NO PARKING ON LAWNS!!!!

RECYCLING PICKUP

One bulk item from each residence will be picked up on the last Tuesday of each month.

Examples of Bulk Items

- one piece of furniture mattress and box spring
- One appliance that DOES NOT contain Freon (washer, dryer, stove)

**Appliances with Freon are the responsibility of the resident!

RECYCLABLES INCLUDE

- ◇ **Newspapers:** The entire newspaper including inserts
- ◇ Aluminum, steel, and bimetal cans: Food and beverage cans only.
- ◇ **Glass:** bottles & jars Food and beverage containers only
- ◇ **Plastic:** food and beverage containers marked #1 thru #7
- ◇ **Plastic:** detergent and soap containers marked #1 thru #7
- PLEASE RINSE ALL CONTAINERS LISTED ABOVE
- ◇ **Misc. paper:** Magazines, junk mail, cardboard, phone books & paperboard (cereal & clean pizza boxes).
- ◇ **All kinds of cartons:** milk, juice, etc.



Recycling is unlimited!!



ELECTRONICS RECYCLING

The SECCRA Landfill at 219 Street Road (Route 926), West Grove, is accepting televisions and electronics. There is no fee!

A complete computer system is considered one unit. All items must be intact and no disassembled items will be accepted.



Residents must be able to unload their own items. Items must be put on the appropriate pallet or in the labeled Gaylord box.

OTHER ITEMS THAT CAN BE RECYCLED AT SECCRA: follow instructions when entering site

Auto Tires - \$3.00 each

Truck Tires—(no rims) \$10.00 each

Tractor Tires (no rims or earth mover tires) \$25.00 each

Refrigerate Appliances (SECCRA removes refrigerant) \$12.00 each

Other appliances—\$5.00 each

Unchipped Brush and Limbs - \$45.00 per ton



Car Batteries : Free



Household Batteries: For now, put alkaline batteries in the trash.



Motor Oil and Antifreeze: Free



2017 CHESTER COUNTY HOUSEHOLD HAZARDOUS WASTE EVENTS

Residential Only..... Businesses and Contractors will be turned away

NO ELECTRONICS WILL BE ACCEPTED

Saturday, September 9, 2017 Oxford School District Administrative Bldg
125 Bell Tower Lane , Oxford, PA 1933 9:00 a.m.—3:00 p.m.

Saturday, October 14, 2017 Government Services Center
601 Westtown Road, West Chester, PA 19380 9:00 a.m.—3:00 p.m.

Hazardous cleaning and maintenance products will have the following cautionary words on label: poisonous, caustic, toxic, flammable, ignitable, corrosive, reactive, caution, warning, danger or hazardous.

Maximum Amount Accepted—25 gallons or 220 lbs. / No Metal Drums



No Freon Appliances will be accepted!

• What does it take to be a volunteer?

Not as much as one may think. Help is needed in all areas of emergency services and no experience is necessary. All the costs associated with training are covered by the emergency response agency. It does take time to learn, train, and maintain the skills necessary to assist in emergency situations. All we need is your dedication.

• Who can become a member?

Anyone. Most agencies are responsible for their own fundraising, recordkeeping, and the other normal business operations of a company. All of these tasks are performed by the volunteer members.

If you have a desire to help your community, your neighbors, and possibly your own family, than let us help you become a first responder.

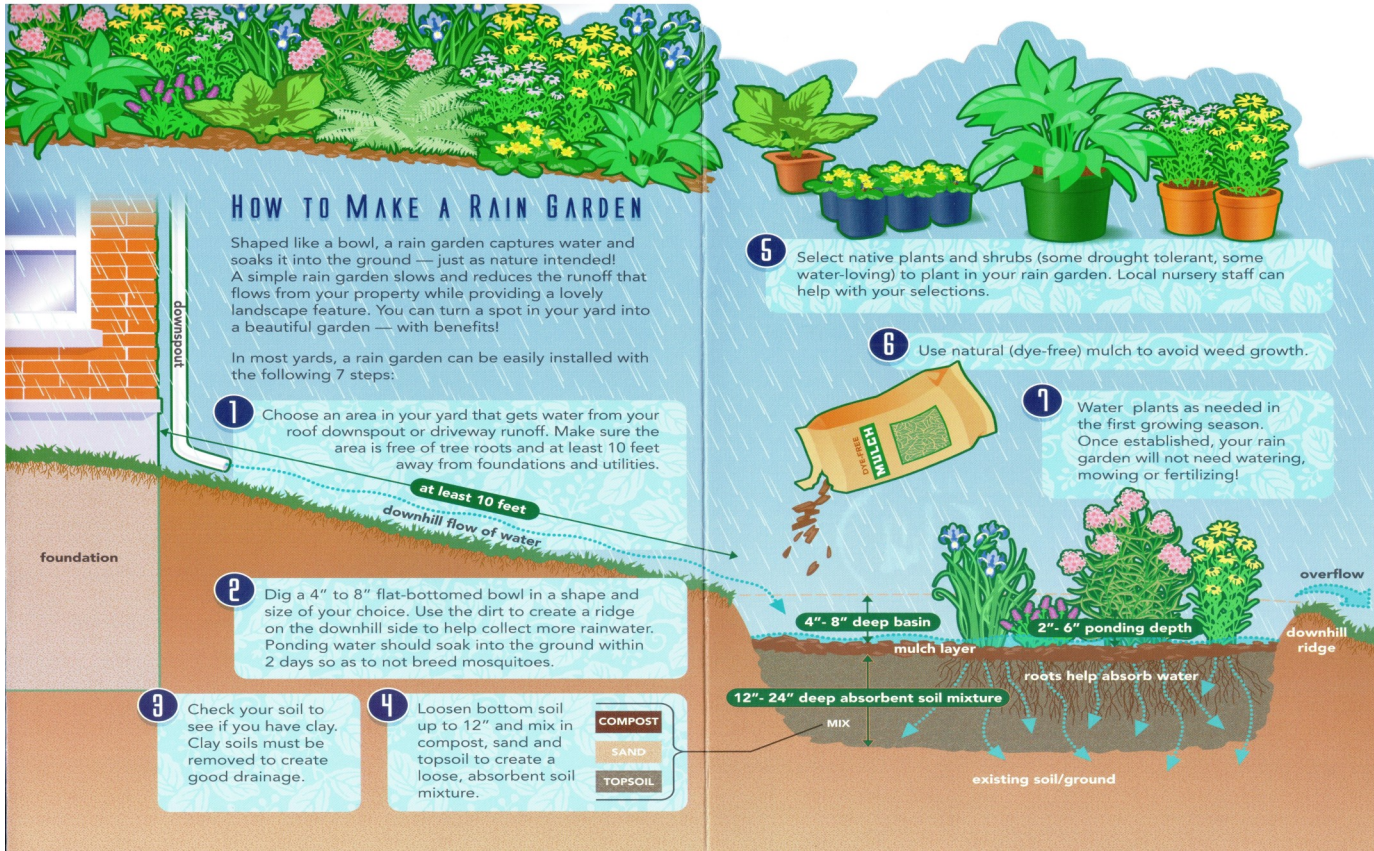
Visit -

HELPFIGHTFIRE.COM

VOLUNTEER



SLOW THE FLOW AND REDUCE STORMWATER POLLUTION



OTHER WAYS TO SLOW THE FLOW AND REDUCE STORMWATER POLLUTION

GRASS CYCLE

No need to chemically fertilize your lawn when you allow grass clippings to remain on the ground and compost naturally. Bonus – No Raking Required!

L

PICK UP THE POO

Pet waste is not a good natural fertilizer but it is a great source of bacterial pollution when it gets washed into the storm drains & local waterways.

CHOOSE LESS TOXIC PRODUCTS

Switching out toxic household cleaners, pesticides, etc. for more natural alternatives reduces household hazardous waste and creates a healthier environment in and outside your home.

For more information ways you can help, or to report any non stormwater discharge into local waterways please contact

KEEP LITTER OFF YOUR WALK AND STREET

Trash in creeks and rivers gets there from someone throwing it on the ground. Rain carries it to the waterways.

CLEAN STREETS = CLEAN STREAMS

Avondale Borough

610-268-8501

or

Pennsylvania Department of Environmental Protection

www.dep.state.pa.us

Keyword: Stormwater

FROM THE DESK OF THE EMERGENCY MANAGEMENT COORDINATOR.....BILL SHORE

Excessive Heat Warning



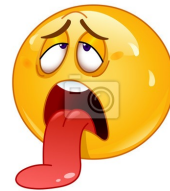
Heat kills by pushing the human body beyond its limits. In extreme heat and high humidity, evaporation is slowed and the body must work extra hard to maintain a normal temperature.

Most heat disorders occur because the victim has been overexposed to heat or has over-exercised for his or her age and physical condition. Older adults, young children and those who are sick or overweight are more likely to succumb to extreme heat.

A heat wave is an extended period of extreme heat, and is often accompanied by high humidity. These conditions can be dangerous and even life-threatening for humans who don't take the proper precautions.

What you should do if the weather is extremely hot:

- ◆ Never leave children or pets alone in closed vehicles.
- ◆ Stay indoors as much as possible and limit exposure to the sun. Stay on the lowest floor out of the sunshine if air conditioning is not available.
- ◆ Postpone outdoor games and activities.
- ◆ Consider spending the warmest part of the day in public buildings such as libraries, schools, movie theaters, shopping malls, and other community facilities. Circulating air can cool the body by increasing the perspiration rate of evaporation.
- ◆ Eat well-balanced, light, and regular meals. Avoid using salt tablets unless directed to do so by a physician.
- ◆ Drink plenty of water; even if you do not feel thirsty. Avoid drinks with caffeine. Limit intake of alcoholic beverages.
- ◆ Dress in loose-fitting, lightweight, and light-colored clothes that cover as much skin as possible. Avoid dark colors because they absorb the sun's rays.
- ◆ Protect face and head by wearing a wide-brimmed hat.
- ◆ Avoid strenuous work during the warmest part of the day. Use a buddy system when working in extreme heat, and take frequent breaks.
- ◆ Check on family, friends, and neighbors who do not have air conditioning and who spend much of their time alone.
- ◆ Avoid extreme temperature changes.
- ◆ Check on your animals frequently to ensure that they are not suffering from the heat.



HEAT STRESS

Heat stress is when the body is unable to cool itself by sweating. When the air temperature is close to or warmer than normal body temperature, cooling of the body becomes more difficult. Blood circulated to the skin cannot lose its heat. Sweating then becomes the main way the body cools off. However, sweating is only effective if the humidity level is low enough to allow evaporation, and if the fluids and salts that are lost are adequately replaced. If the body cannot get rid of excess heat, it will store it. When this happens, the body's core temperature rises and the heart rate increases. As the body continues to store heat, other heat related illnesses start to occur.

HEAT STROKE

Heat stroke is the most serious heat-related disorder. It occurs when the body becomes unable to control its temperature. The body's temperature rises rapidly, the sweating mechanism fails, and the body is unable to cool down. When heat stroke occurs, the body temperature can rise to 106 degrees Fahrenheit or higher within 10 to 15 minutes. Heat stroke can cause death or permanent disability if emergency treatment is not given. Symptoms of heat stroke include the following:

- | | | | |
|-------------------------------------|----------------------|-----------------|-----------------------|
| - Hot, dry skin or profuse sweating | -Hallucinations | -Chills | - Throbbing headaches |
| -High body temperature | -Confusion/dizziness | -Slurred speech | |

HEAT CRAMPS

Heat cramps usually affect people who sweat a lot during strenuous activity. This sweating depletes the body's salt and moisture levels. Low salt levels in muscles causes painful cramps. Heat cramps can also be a symptom of heat exhaustion. Symptoms of heat cramps include muscle pain or spasms usually in the abdomen, arms or legs.